

IDC

BROCHURE 2016



Intro

About us – Introduction of the Team

Welcome in Murter

Najada diving – The Dive Center

IDC Preparation

IDC – Instructor Development Course

IDC Prerequisites, Duration & Paperwork

IDC Equipment & Material

The Emergency First Response Instructor

PADI OWSI or “Cross Over”

PADI MSDT prep. Course

PADI Instructor Exam (IE)

Courses with Full Face Mask

PADI TecRec Courses

The IDC Staff Instructor Course

Dates & Contact

Pricelist

Registration Form

IDC Checklist



INTRO



Welcome to our PADI Instructor programs at Najada diving in Murter, Croatia.

Since 2012 we are offering our instructor courses together with Najada diving on Murter Island. The next Instructor Development Courses (IDC) is conducted in June 2016.

This brochure helps you to find all information you need to become a professional PADI Instructor. Since we think personal support and guidance ahead of the course are quit important please do not hesitate to contact us via Email or Skype (see Contact) or find us and our Instructor Courses on:

facebook

PADI Course Directors Ute & Miha

We are looking forward to teaching you to become a PADI Pro,

Ute & Anna with Najada diving team

IDC TEAM

PADI COURSE DIRECTOR



Ute has been a Course Director since August 1999 when she did her CDTC in Newport Beach, CA, USA.

Since more than sixteen years Utes IDCs are very popular due to their relaxed atmosphere and the high level of professionalism. Her friendly, supportive and open way of guiding people through the course gave her already the respect of many candidates. So far already more than 2.800 candidates achieved their instructor level with her. Ute has been receiving honors from PADI for her outstanding performance in conducting IDCs and has been awarded in 10 x Platinum Frequent Trainer Status each year since 2006. (CD # 913202)

NAJADA STAFF

Anna Nokela & her Najada diving team



WELCOME ON MURTER

We are looking forward to having you with us in Murter and we would be happy to assist you to find the right accommodation for your stay. We can recommend you for example the guesthouse "Coronata".

The friendly family is renting rooms with or without breakfast and has one single room and six apartments with own shower/toilet.

If available there is also one apartment for up to 4 persons directly located in the first floor of the diving center itself and several other options of apartments in the surrounding of it.



One more option of course is camping. The closest camping place here would be "Slanica". Because prices of the accommodation differ depending on the time of the year we would kindly ask you to send us an email and let us know what you are looking for and for which period of time you would like to stay in Murter.

For information and reservation please contact Anna Nokela directly via email:

anna.nokela@najada.com



THE DIVE CENTER

The island of Murter is connected to the mainland via a small bridge in the Murter-channel in Tisno. Its mainland connection, well equipped marinas, excellent beaches and its close location to Kornati National Park, make Murter a very attractive tourist resort for divers and a great location for our instructor development courses.



Najada diving is located directly at the seaside. The reception is found in the ground floor of the building right next to the IDC classroom. Showers, toilets and an area to dry the dive gear for the divers are on the same level.

The garden area and its terrace is inviting us to relax during our IDC breaks and can be used for briefings and debriefings.

The dive centre also offers free wireless LAN for all candidates. For our confined & open water presentations we will jump directly into the close sea, which offers a great logistic.



IDC

YOUR OWN PREPARATION

If you arrive in Murter a few days in advanced you have the possibility to join a PADI Instructor during an Open Water Course, this is a good way to get prepared.

Or jump in the sea or pool with a buddy and practice the demonstration of all 24 skills out of the PADI Open Water Diver Course as you did during your Divemaster Training Course. Remember that your demo should be slow, exaggerating and easy looking.

Or join our IDC preparation program, starting one day before the IDC. Here we are going through rescue skills, dive master theory and the skill demonstration. This is a good fresh up and creates a more relaxed atmosphere. AND: You'll get to know the staff and other participants already.

Or – using the revised IDC curriculum you can start a part of your Instructor Development Course online:

There are a couple of things you could prepare in advance before your IDC starts. You can either refresh your theory knowledge using the "PADI Diving Knowledge Workbook" and the "PADI Encyclopedia" or you log on to the PAD webpage eLearning section under:

<http://www.padi.com/elearning-scuba-registration/default.aspx?irra=798750>

and choose to study the "**dive theory**" online.

Apart from studying the dive theory online you can as well start the following IDC sections online using the same link above but choosing "**idc online**" on the PADI webpage:

- a. Learning, Instruction and the PADI System
- b. General Standards and Procedures
- c. Risk Management
- d. Marketing Diving
- e. Start Diving
- f. Teaching PADI Specialty Diver Courses
- g. Business of Diving
- h. Keep Diving
- i. How to Teach the Recreational Dive Planner (RDP) – required for crossover candidates; optional for PADI Members

You can complete those independent learning sections online through PADI eLearning, or as well participate in these sections during your IDC.



IDC

INSTRUCTOR DEVELOPMENT COURSE

ONE LIFE. LIVE IT.

Our business is introducing people with a dream to a new career and helping to ensure your professional success. The goal of our IDC program is simple: We will ensure that you the future PADI professional diving instructor will be well prepared to work in the recreational diving industry. Almost anyone can train you to pass the IE; we want to train you to get a job. The IDC includes many useful workshops that will make candidates more prepared for the "real world" after passing the IE.

During the IDC we will provide you all the knowledge you need to feel safe and comfortable while conducting presentations in the classroom, pool or open water. Practical workshops, hints and suggestions as well as the correct use of the PADI Instructor Manual will make you more familiar with the PADI standards & procedures in all different kind of courses.

It's okay to do mistakes, no problem. We are there to positive reinforce you or provide help wherever needed. Our frequent counseling during the course will make it easy for you to improve yourself and feel more self confident as an upcoming instructor.

The IDC program of PADI is split in three parts. It starts with the "Self study Section" which can be done online using PADI eLearning or in Person during the first 2 days of your IDC. The part of the "Assistant Instructor" course follows right after and then we go on directly to the "Open Water Scuba Instructor" part of the IDC course.

Instructors who are already certified on instructor leadership level with another recreational dive training organization just need to join our OWSI program described later in here.



IDC

PREREQUISIT DURATION PAPERWORK

Prerequisites for the AI/IDC:

1. Be at least 18 years old.
2. Be certified as a PADI Divemaster or hold a leadership level certification with another recreational diver training organization.
3. Submit proof of CPR and first aid training within the last 24 months.
4. Certified diver for at least 6 months + 60 logged open water scuba dives. (100 for the IE!)
Have documentation of experience in deep, night and navigation diving.
5. Be fit for diving and submit a medical statement not older than one year including the date of the IE. A licensed physician must sign and stamp the form and state that you are fit for diving. The physician signing the form may not be the applicant.
6. Submit documentation of any equivalent certification for entry-level, advanced, rescue and leadership-level issued by another recreational diver training organization.
7. If not a PADI Divemaster, successfully complete the PADI Divemaster Course diver rescue skill assessment.

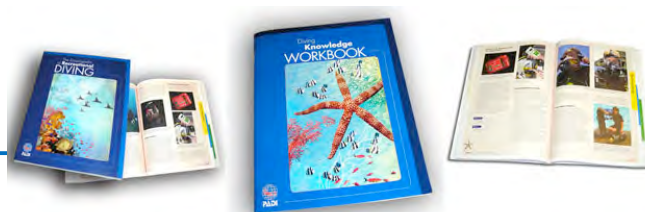
Duration: Our IDC program takes 10 days.

PADI fee: 151.- Euro + tax for your Instructor application (Price 2016).

590 diving

Required paperwork:

1. Medical statement that you are fit for diving, no older than one year incl. the date of the IE.
2. Logbook with at least 60 open water dives logged (100 for the IE!).
3. All PADI certificates or equivalent in original.
4. At least two photos, passport size.
5. Prove of CPR/First Aid not older than 24 months.
6. The sticker of your PADI's Guide to Teaching.
7. For teaching status as an OWSI show prove of ERF Instructor status.



IDC

EQUIPMENT MATERIAL

Required dive equipment for your IDC:

Mask, Snorkel, Fins, BCD, Regulator INT or DIN Adapter, Alternate Air Source, Pressure gauge, Wetsuit, Watch & Depth Gauge or Diving computer, Compass, Diving knife, UW-Slate, Dive Table, Emergency Signal device (visual & acoustic), pocket mask. We recommend you min. a 7 mm wetsuit.



Required PADI Materials for your IDC: available as PADI crew pack (#60038)*

- Current PADI Instructor Manual
- PADI's Guide to Teaching incl. Sticker*
- PADI Specialty Course Instructor Manual, or these specialty course instructor guides: Peak Performance Buoyancy, Project AWARE and AWARE – Coral Reef Conservation*
- PADI Open Water Diver Manual
- Recreational Dive Planner – RDP Table and eRDP ML, including Instructions for Use booklets
- How to Use and Choose Dive Computers book
- Open Water Diver Quizzes and Exam booklet*
- Adventures in Diving Manual
- PADI Rescue Diver Manual
- Rescue Diver Final Exams booklet*
- PADI Divemaster Manual
- Divemaster Final Exams booklet*
- Aquatic Cue Cards for OWD, AiD, Rescue, DM, DSD*
- Confined Water Lesson Preparation slate*
- Open Water Training Dive Lesson Planning slate*
- The Encyclopedia of Recreational Diving
- Diving Knowledge Workbook or eRecord for Dive Theory Online



EFR+CFC INSTRUCTOR

During the Emergency First Response Instructor course, you will build on your skill as an Emergency Responder and focus on developing your instructional abilities to teach these skills to others. The Instructor course provides you with the additional training necessary to teach the Emergency First Response Primary Care (CPR), Secondary Care (First Aid) and Care for Children courses. Through a multi-media approach of independent study, classroom sessions and practical teaching assignments, you learn to conduct Emergency First Response courses.

The instructor course covers specific goals and performance requirements for the Primary Care, Secondary Care and Care for Children courses, along with instruction on how to structure learning, the requirements of performance-based training, and your role as the instructor in the learning environment. You also learn how to motivate students, evaluate student knowledge, present course content effectively, become proficient in developing students' hands-on skills practice sessions, and are taught how to present an effective scenario-based learning experience.



Prerequisites:

Be at least 18 years old and have completed the Emergency First Response Primary Care (CPR), Secondary Care (first aid) or equivalent within the past 24 months.

PADI fee: 94.- Euro + tax for your EFR Instructor application (Price 2016).

Duration: 1-2 days, depending on the amount of participants.

Materials:

- EFR & CFC Instructor Manual
- EFR & CFC DVD
- EFR Student Manual
- CFC Student Manual
- First Aid Kit



OWS INSTRUCTOR OR „CROSS OVER“

With the new IDC curriculum the PADI IDC is split in three parts: Self study, the AI program and the OWSI program. Certified diving instructors of other organizations have the possibility to only participate in the self study part and the OWSI program as well as the Instructor Examination to become PADI Instructor. Or you are a PADI Assistant Instructor and you want to take your last step to become a PADI Instructor. The goal of the OWSI program is, to let participant get to better know PADI as a diving organization, especially if they have already experience in teaching diving courses through other organizations. In other words: PADI's philosophy, student level courses and the teaching materials. The OWSI program is concentrated to prepare candidates to teach PADI courses in the future and give them essential background information to participate successfully in the instructor examination.

To participate in a PADI OWSI program, you will need to have/be:

- Be at least 18 years old.
- Be a good standing member of another recreational diving organisation since at least 6 months f.e.: CMAS ** Monitor or higher, NAUI, PSS, SSI, PDIC, IDEA Instructor Level 2 or higher, BSAC Club Instructor or higher, etc.
- Have a medical statement sign and stamped by a doctor, showing that you are fit for scuba diving. This statement has to be made within the last year and has to be valid including the date of the IE.
- Be a certified diver for at least 6 months and show prove of 60 logged open water dives in your logbook. (*Experience in deep diving, night diving & U/W navigation*)
- Show prove of training in First Aid and CPR training within the last 24 months.
- Show prove of all your certificates of the other diving organisation, from entry level to rescue level plus any other leadership level as well.

Duration: 6 days + 2 days IE.

PADI fee: 151.- Euro + tax for your Instructor application + IE fee (Price 2016).

Materials: same as for the IDC.



MSDT PREP PROGRAM

Earning PADI Specialty Instructor ratings allows you to teach a wide array of exciting courses in special interest areas. Besides giving you the chance to do your favorite type of diving, specialty diver course allows you to share your interests and expertise with others. Many standardized PADI Specialty Diver courses are supported with videos and books that make even easier to teach.

Taking a Specialty Instructor Training Course from your PADI Course Director provides you with practical experience for conducting these courses. This will make you more employable in today's dive industry by allowing you to teach a multitude of courses right from the beginning on.



During this program you get can get trained in the following specialty instructor courses.

Choose of the following:

1. Deep Diving
2. Underwater Navigation
3. Night Diving
4. EANx Nitrox
5. Multilevel
6. Search & Recovery
7. Wreck Diving
8. Boot Diving
9. UW Scooter
10. UW Video
11. Sidemount
12. Emergency Oxygen Provider
13. Underwater Naturalist
14. AWARE Fish ID
15. Underwater Photography
16. Self Reliant Diver
17. DUP/Business of DUP
18. Equipment Specialist
19. Diving with Full Face Mask
20. UW Communication with Full Face Mask
21. Dry Suit Diving
22. Tec Sidemount

Duration: Five Specialty Instructor Courses approx. 3-5 days.
One Specialty Instructor Course 1 day.

PADI fee: 35.- Euro + tax for each Specialty Instructor application (Price 2016).

Material: PADI Specialty Instructor Course CD Rom
+ special equipment depending on the course.



IE „INSTRUCTOR EXAM“

Professional Instructor Examiners from PADI International or PADI Local Area Offices conduct IEs to confirm that instructor candidates meet the requirement for their certification as a PADI Instructors. We are happy to have the IE in June 2016 after our IDC directly in Murter which makes it very relaxed for our candidates because no travelling in between is needed.

The IE is a two-day program that evaluates your diving knowledge and skills, as well as your ability to deliver teaching presentations in the classroom, confined water and open water. Although the evaluation is pass/fail, you have the opportunities to retake most initial presentations, if necessary. With the preparation you get from us during the IDC and some additional independent study the likelihood of successfully completing your first IE is very high.

Some dive centers guarantee you to pass an IE - we prefer to guarantee you a high quality instructor course, since this is the only part we can influence.

The IE is split in four parts:

1. Written Exams (Dive theory - 60 Questions (5x12) & Standards 50 Questions)
2. Knowledge Development Presentation (prescriptive)
3. Teaching in Confined Water (Presentation of one Skill & 5 Skills out of the Skill Circuit)
4. Teaching in Open Water (Presentations of two Skills & Rescue Demo No. 7)

Prerequisites:

Successfully complete an IDC / OWSI within 12 months.

Have been a certified diver for at least 6 months and have proof of at least 100 logged dives.

Duration of the IE: min. 2 days

Of course we will be with you during those days and help with any kind of logistics and mental support. We don't feel our work is finished with the IDC - if you have any questions in your future diving career do not hesitate to contact us – we will be happy to assist you even as PADI instructor!

PADI IE fee:

You can pay your IE fee to PADI using a credit card or transfer the money via cheque or bank transfer.

The amount of the PADI IE fee in Croatia is approx.: 525.- + tax € (Price in 2016).

DIVING WITH FULL FACE MASK

Welcome to a new comfortable dive adventure!

As a recreational diver we are used to having a regulator in our mouth all the time and breathing through the nose is not possible wearing a normal diving mask. This is different while diving with a Full Face Mask! You will find yourself breathing like on the surface and discover yourself enjoying this new possibility. Additionally you will experience a fantastic field of view while diving.

Depending in which conditions you dive you will benefit as well on temperature protection. This great advantage is appreciated especially in cold water diving and makes your adventure more enjoyable - especially in winter times.



UW COMMUNICATION WITH FULL FACE MASK

You are a Full Face Mask Instructor already? Find additional challenges [here!](#)

During this course we want to introduce you to how you can effectively communicate underwater using OCEAN REEFs communications network (SUB T, SUB R & SURF). We all respect that silence is one of the most appealing features in this sport but we cannot deny that additional communication can sometimes have implications in terms of safety, research, teaching or simply human interaction.

People who work underwater need to communicate with their colleagues (on the surface or underwater), both for logistical support and safety. As a dive professional your intention to dive is not only leisure but to do a great job underwater providing feedback to your students and keeping a safe supervision. These communications tools will help you to provide this, especially in conditions with lower visibility.

OCEANREEF
connecting divers

PADI TECREC PROGRAMS



TecRec Gas Blender User and Instructor Course: This course covers the physical properties of oxygen, its associated hazards, handling requirements and what cleaning equipment is necessary as well as the five methods of obtaining the desired enriched air nitrox mix and the various methods used to obtain proper helium mixes.

Discover Tec allows divers curious about tec diving to try out a full technical rig in controlled conditions and it may be credited toward the Tec 40 course if you meet all performance requirements for the dive.

Tec40 introduces divers to limited decompression diving within accepted recreational depth limits. Although the student who clearly intends to continue through Tec 50 is encouraged to complete Tec 40 in complete tec gear, the limits of the Tec 40 qualification allow more flexibility.

Tec45 provides a transitional qualification while continuing to develop as a technical diver. This diver is qualified to make limited technical decompression dives using the technical diving equipment and procedures.

Tec50 course is the complete, entry-level skill set for extensive open circuit deep decompression Tec Diving (formerly Tec Deep Diver). The diver is qualified to make technical decompression dives within the limits of training and equipment.

Tec Sidemount course covers the use of Sidemount configuration for technical diving. It has been developed for recreational divers who want to use Sidemount to enter open-circuit Tec Diving, as well as for experienced tec divers who want to transition to Sidemount.

Tec Instructor The Tec Instructor training course is a sub course within the Tec Deep Instructor training course that focuses on teaching only Tec 40 divers.

Tec Deep Instructor As a Tec Deep Instructor, you'll be qualified to conduct the Discover Tec experience and teach the Tec 40, Tec 45 and Tec 50 courses.

Tec Sidemount Instructor course prepares candidates to conduct the Tec Sidemount Diver course and addresses the philosophy, organization, practical considerations, promotion and other aspects of teaching the Tec Sidemount Diver course.



**WHEN ONE TANK
IS NOT ENOUGH**

IDC STAFF INSTRUCTOR

The PADI IDC Staff Instructor course is designed to provide PADI Master Scuba Diver Trainer with the additional training necessary to staff PADI Instructor Development programs. This course builds upon the Staff Instructor candidate's experience and abilities as a dive educator while concentrating on developing evaluation and counseling skills. Through independent study, classroom sessions, guided evaluation training and an internship, IDC Staff Instructor candidates learn to teach the PADI Assistant Instructor course and assist with the new revised instructor development program. A further goal is to familiarize the IDC Staff Instructor candidate with PADI IDC/OWSI standards, curriculum, and procedures and develop the IDC Staff Instructor candidate's presentation skills to a role-model level.

Prerequisites to attend the IDC Staff Instructor Course as follows:

- Teaching status PADI Instructor for the current year.
- PADI Master Scuba Diver Trainer.
- Emergency First Response Instructor.
- Agree to conduct all levels of diver training consistent with the standards and philosophy outlined in the PADI *Instructor Manual* and PADI's *Guide to Teaching*.
- Agree to use the PADI System and its components in their entirety.

Duration including auditing an IDC: 10 days

PADI fee: 85.- Euro + tax for your Staff Instructor application (Price 2016).

PADI Materials Required:

PADI Course Director Manual (min. VERSION 2010)

PADI Instructor Manual (VERSION 2016)

Confined- and Open Water Teaching Presentation Evaluation Slate

Skill Evaluation Slate with 24 Skills

PADI's Guide to Teaching

Aquatic Cue Cards for Open/Confined water/Rescue

Logbook & Equipment: as IDC



CONTACT

Ute Welcker

PADI Course Director # 913202

Tel.: (+49) 0179-2233638
Fax: (+49) 03212-1267760

Email: utewelcker@gmx.net
Web: <http://www.UteWelcker.com>



padi.cd.ute



Course Directors Ute & Miha

Najada diving

Anna Nokela

Put Jersan 17, 22243 Murter, Croatia
Tel: (+385) 22-435 630

Email: anna.nokela@najada.com
Web: <http://www.najada.com>



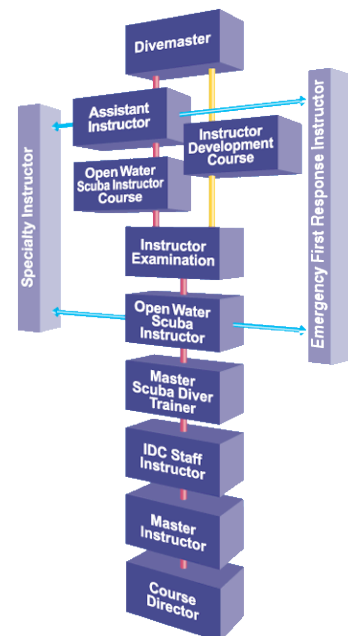
Najada diving

IDC DATE

JUNE 2016



EFR Instructor:	18./19. June 2016
Assistant Instructor:	14. - 18. June 2016
Open Water Scuba Instructor:	20. - 24. June 2016
PADI IE Exam:	25. - 26. June 2016 on Murter
IDC Staff Instructor course:	14. - 24. June 2016
MSDT prep. program:	26. - 26. June 2016
Full Face Mask Specialty: User & Instructor Course	25./26. June 2016
Tec Side Mount Course: User & Instructor Course	27. – 29. June 2016



PRICELIST 2016

COURSES



Assistant Instructor Course:	450.- €
Open Water Scuba Instructor (OWSI):	600.- €
IDC= Assistant (AI) + Open Water Scuba Instructor (OWSI)	900.- €
IDC= Assistant (AI) + Open Water Scuba Instructor (OWSI) for Elearner	800.- €
IDC Staff Instructor Course (IDC SI):	650.- €
Emergency First Response Instructor Course (EFRI) excl. material:	300.- €
EFR Instructor Update "Care for Children" (EFRI CFC) excl. material:	80.- €
Master Scuba Diver Trainer prep. (MSDT prep.) excl. Deep, Wreck or FFM	500.- €
Master Scuba Diver Trainer prep. (MSDT prep.) incl. Deep, Wreck or FFM	600.- €
Other Specialty Instructor courses possible:	from 60.- to 180.- €
<small>Deep, Night, Navigation, Search & Recovery, Boat Diving, Multilevel, Naturalist, Tec Basic, AWARE Fish ID, Equipment, Wreck Diving, DUP, Nitrox, Scooter, Oxygen Provider, UW Video, Dry Suit, Full Face Mask, UW Communication with Full Face Mask, Self Reliant, Side Mount.</small>	

TECREC

TecRec Gas Blender:	120.- €
Discover TEC: incl. equipment, material and fillings	100.- €
Tec 40: excl. equipment, material and fillings	350.- €
Tec 45: excl. equipment, material and fillings	400.- €
Tec 50: excl. equipment, material and fillings	450.- €
Tec Side Mount: excl. equipment, material and fillings	400.- €
TecRec Gas Blender Instructor:	200.- €
Tec Instructor: excl. equipment, material and fillings	400.- €
Tec Deep Instructor: excl. equipment, material and fillings	800.- €
Tec Side Mount Instructor: excl. equipment, material and fillings	450.- €

Go Side Mount – Basic Side Mount Open Water Course: 450.- €



PACKAGE

Package I:	IDC + EFRI + O2	1150.- €
Package II:	IDC + EFRI + O2 + Nitrox	1170.- €
Package III:	IDC + EFRI + MSDT prep. "1" + O2 + Nitrox	1600.- €
Package IV:	IDC + EFRI + MSDT prep. "2" + O2 + Nitrox	1700.- €
Package V:	OWSI + EFRI + O2 Instr.	850.- €

REGISTRATIONFORM

Name, Surname: _____ Birthdate: _____

Street _____ Country: _____

ZIP, City: _____ DM AI OWSI

Email: _____ PADI No.: _____

Tel: _____ Fax: _____

**I would like to register for the following IDC programs 2016 at Najada diving:
(Package-prices will be given automatically by us if you select several courses!)**

PADI Instructor Development Course (AI+OWSI): 900.- €

14. – 24. June 2016 IE Exam: 25./26.06.2016

PADI Emergency First Response Instructor Course + O₂ Instr.: 300.- €

18./19.06.2016

PADI Assistant Instructor Course (AI): 450.- €

14. - 18.06.2016

and all year on request directly at Najada Diving

PADI OWSI Course (Prerequisite PADI AI or „Cross Over“): 600.- €

20. - 24.06.2016

PADI Master Scuba Diver Trainer prep. or other Specialty Instructor Courses

Please choose: Price for five Instructor Courses excl. FFM, Deep or Wreck: 500. - €. Including FFM, Deep or Wreck 600.- €

For one: between 60.- to 180.- €

UW Naturalist

Boat Diving

Self Reliant (Solo)

UW Scooter

UW Navigation

Nitrox

Night Diving

Oxygen Provider

UW Video

Deep Diving

Dry Suit Diving

DUP/Business of DUP

Search & Recovery

Multilevel

Wreck Diving

Full Face Mask (FFM)

UW Communication with Full Face Mask (FFM)

Side Mount

UW Video

PADI IDC Staff Instructor: 650.- €

14. – 24.06.2016



PADI TecRec Courses:

Discover TEC = 100.- €

Tec 40 = 350.- €

Tec 50 = 450.- €

Tec 45 = 400.- €

Tec Sidemount = 400.- €

Tec Sidemount Instructor = 450.- €

Tec Instructor = 400.- €

Tec Deep Instructor = 800.- €

Gas Blender = 120.-€

Gas Blender Instructor = 200.- €



Go Side Mount – Basic Side Mount Open Water Course: 450.- €

on request!

Date: _____ Signature: _____

Email: utewelcker@gmx.net Fax: 0049-3212-1267760

IDC CHECKLIST



Materials:

- PADI OWD Manual
- PADI AOWD Manual
- PADI Rescue Manual
- PADI Divemaster Manual
- PADI Instructor Manual (**new version**) paper or cd rom version
- RDP Table
- eRDP ML
- PADI's Guide to Teaching with decal!!!
- PADI Encyclopedia
- Cue Cards for OWD Course: Confined & OW Training
- Cue Cards for DSD, AOWD, Rescue, DM Course
- OWD, Rescue and DM Quizzes & Exams
- Confined & Open Water Teaching Preparation Slate
- Diving Knowledge Workbook
- Specialty Instructor Outline „Peak Performance Buoyancy“
- Specialty Instructor Outline „Project AWARE“
- Specialty Instructor Outline „AWARE Coral Reef Conservation“
- Downloads of all instructor guides for: OWD, Rescue, DM
- Pocket mask for Rescue exercise

Others:

- Medical Statement (for IDC & IE) (not older than one year, including the date if the IE!)
- Logbook (with a minimum of 100 open water dives logged)
- All original certification cards (from OWD to DM / ASSI or equivalent)
- Min. 2 photos (passport size)
- Proof of First Aid & CPR not older than two years!
- A calculator
- Post-its, Markers
- How do you want to pay the PADI fees like “IDC Application” and “IE fee”?
Do you have a credit card? Please bring it with you. PADI does not accept cash on the IEs!